



www.FortressRailing.com



FORTRESSACCENTS SIMPLIFIED

POST CAPS & LED LIGHTING

- STRONG AND DURABLE DIE-CAST ALUMINUM POST CAPS WITH OPTIONAL LED LIGHTING SYSTEM
- ENERGY EFFICIENT LED LIGHTING
- VERSATILE - USE WITH A VARIETY OF DECKING AND RAILING MATERIALS
- MOST FORTRESSACCENTS COMPONENTS ARE ETL LISTED
- VIRTUALLY MAINTENANCE FREE BACKED BY A 10 YEAR WARRANTY

POST CAPS



GLOSS BLACK

ITEM# 52500020 - 2" (51MM)
 ITEM# 52500030 - 3" (76MM)
 ITEM# 52500350 - 3.5" (89MM)
 ITEM# 52500040 - 4" (102MM)
 ITEM# 52500050 - 5" (127MM)
 ITEM# 52506000 - 6" (152MM)



ANTIQUÉ BRONZE

ITEM# 52500026 - 2" (51MM)
 ITEM# 52500036 - 3" (76MM)
 ITEM# 52500356 - 3.5" (89MM)
 ITEM# 52500046 - 4" (102MM)
 ITEM# 52500056 - 5" (127MM)
 ITEM# 52506006 - 6" (152MM)



WHITE

ITEM# 52500031 - 3" (76MM)
 ITEM# 52500351 - 3.5" (89MM)
 ITEM# 52500041 - 4" (102MM)
 ITEM# 52500051 - 5" (127MM)
 ITEM# 52506001 - 6" (152MM)



BLACK SAND

ITEM# 52500028 - 2" (51MM)
 ITEM# 52500038 - 3" (76MM)
 ITEM# 52500358 - 3.5" (89MM)
 ITEM# 52500048 - 4" (102MM)
 ITEM# 52500058 - 5" (127MM)
 ITEM# 52506008 - 6" (152MM)

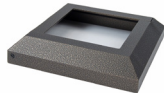
2" and 3" Post Caps are used with Fortress Posts. 3.5", 4", 5", and 6" Post Caps are used with Wood, Vinyl and Composite Posts

POST BASE COVER



GLOSS BLACK

ITEM# 52535010 - 3.5" (51MM)
 ITEM# 52504010 - 4" (76MM)
 ITEM# 52505010 - 5" (89MM)
 ITEM# 52506010 - 6" (102MM)



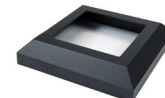
ANTIQUÉ BRONZE

ITEM# 52535016 - 3.5" (51MM)
 ITEM# 52504016 - 4" (76MM)
 ITEM# 52505016 - 5" (89MM)
 ITEM# 52506016 - 6" (102MM)



WHITE

ITEM# 52535011 - 3.5" (76MM)
 ITEM# 52504011 - 4" (89MM)
 ITEM# 52505011 - 5" (102MM)
 ITEM# 52506011 - 6" (127MM)



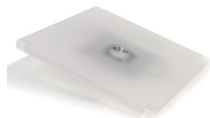
BLACK SAND

ITEM# 52535018 - 3.5" (51MM)
 ITEM# 52504018 - 4" (76MM)
 ITEM# 52505018 - 5" (89MM)
 ITEM# 52506018 - 6" (102MM)

(Use with Wood, Vinyl or Composite Posts)

LED GLOW RINGS AND CAP LIGHT KITS

LED Glow Ring needs additional Pyramid cap sold separately



LED GLOW RING (1.5 Watt)

ITEM# 52502020 - 2" (51MM)
 ITEM# 52503030 - 3" (76MM)
 ITEM# 52535350 - 3.5" (89MM)



ITEM# 52504040 - 4" (102MM)
 ITEM# 52505050 - 5" (127MM)
 ITEM# 52506060 - 6" (152MM)



LED CAP LIGHT KIT

LED Cap Light Module
 (Individual Light 0.5 Watt)

LED Cap Light Kit
 (4 lights) Total 2 Watt



LED Cap Light Module
 ITEM# 52500010

LED Cap Light Kit
 ITEM# 52500000

LED ACCENT LIGHTING ACCESSORIES (0.25W)



VERTICAL POST LIGHT (BOX 2)

ITEM# 52500060 (GLOSS BLACK)
 ITEM# 52500066 (ANTIQUÉ BRONZE)
 ITEM# 52500061 (WHITE)
 ITEM# 52500068 (BLACK SAND)



UNIVERSAL LIGHT (BOX 6)

ITEM# 52501000 (GLOSS BLACK)
 ITEM# 52501006 (ANTIQUÉ BRONZE)
 ITEM# 52501001 (WHITE)
 ITEM# 52501008 (BLACK SAND)



SURFACE MOUNT LIGHT (BOX 6)

ITEM# 52504000 (GLOSS BLACK)
 ITEM# 52504006 (ANTIQUÉ BRONZE)
 ITEM# 52504001 (WHITE)
 ITEM# 52504008 (BLACK SAND)

TRANSFORMERS AND INSTALLATION



TRANSFORMER

ITEM# 52503000 - 30 watt
 Note: Transformers have 2 year Warranty



PREMIUM TRANSFORMER

(With Timer and Dimmer)
 ITEM# 52503300 - 36 watt



BULK WIRE (100')

18-2 GAUGE WIRE
 ITEM# 52502000



FORSTNER BIT

(Use with Surface Mount Light)
 ITEM# 52501040